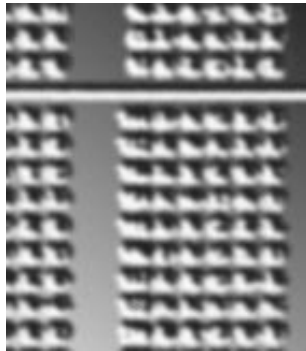


Survey Projects



Our goal is to launch two nationwide survey projects each year.

During the spring semester, we revise and launch our senior exit survey, now in its fourth year of use. Last fall, we began working on our first national survey of psychology alumni. We hope to make it our annual practice to survey alumni in the fall, and senior psychology majors in the spring. We hope you will join us in our efforts to understand important educational issues from a national perspective.

PSYCDATA Board of Directors

R. Eric Landrum
Boise State University
elandru@boisestate.edu

Cyndi McDaniel
Northern Kentucky University
mcdaniel@nku.edu

Todd Walter
D'Youville College
walmart@dyc.edu

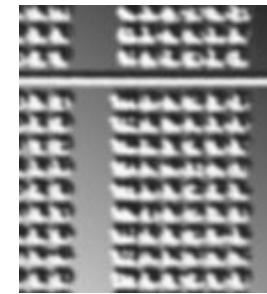
PSYCDATA

Working to understand psychology majors,
alumni, and faculty

For more information, check out:
www.psychologydata.org

PSYCDATA

**A National
Coalition of
Psychology
Educators**



Working to understand
psychology majors,
alumni, and faculty

www.psychologydata.org

As psychology educators, how do we answer questions of national interest?

- When a student applies to graduate school, on average how many schools does he/she apply to?
- How satisfied are psychology alumni with their undergraduate experience?
- What is the persistence rate of psychology majors when psychology was not their first choice?
- For students applying to graduate school, what suggestions would they make about the graduate school application process?
- What are the typical prevailing standards in psychology departments regarding allocation of effort for teaching, research, and service?
- How do psychology graduates perceive their opportunities for meaningful employment with a bachelor's degree in psychology?
- How does a bachelor's degree in psychology prepare students for post-graduate work in fields other than psychology (e.g., medical school, law school)?

PSYCDATA

A National Coalition of Psychology Educators

Two Main Goals of PSYCDATA—

1. Provide a clearinghouse for information about undergraduate education in psychology
2. Provide a mechanism by which national collaborations can be formed to study and better understand undergraduate psychology majors, psychology alumni, and psychology faculty members

Advantages to a coordinated national effort—

- We can begin to answer questions of a national interest in psychology
- We can improve the external validity of the studies conducted
- We can help to make significant contributions to the scholarship of teaching and learning (SoTL)



What Joining Does for Me?

By becoming a participating member of the PSYCDATA coalition, you will be able to

- Contribute survey items specific to your interests that are asked of a national sample
- Access comparative data that allows for meaningful comparisons from a national sample of diverse institutions
- Facilitate an outcomes assessment process that is targeted toward our psychology majors, alumni, and faculty
- Collaborate with other psychology educators who are passionate about answering questions of national interest.

We invite you to join a national, concerted effort to gather and merge data to answer questions of national interest to help improve and enhance undergraduate education in psychology. The PSYCDATA discussion continues across the Internet through the PSYCDATA listserv (<http://list.kennesaw.edu/archives/psycdata.html>) and the PSYCDATA website (www.psychologydata.org).

Participating Institutions for 2009-2010

Boise State University
DePaul University
D'Youville College
East Carolina University
Endicott College
George Fox University
Lasell College
Northern Kentucky University
Randolph College
Saint Mary's University of MN
Salisbury University
University of San Diego

We are currently working on 2010-2011 research studies.

PSYCDATA

For more information, check out:
www.psychologydata.org